

DISD 2014

Taking DataFlex to Mobile

Harm Wibier
Data Access Worldwide

www.dataaccess.com

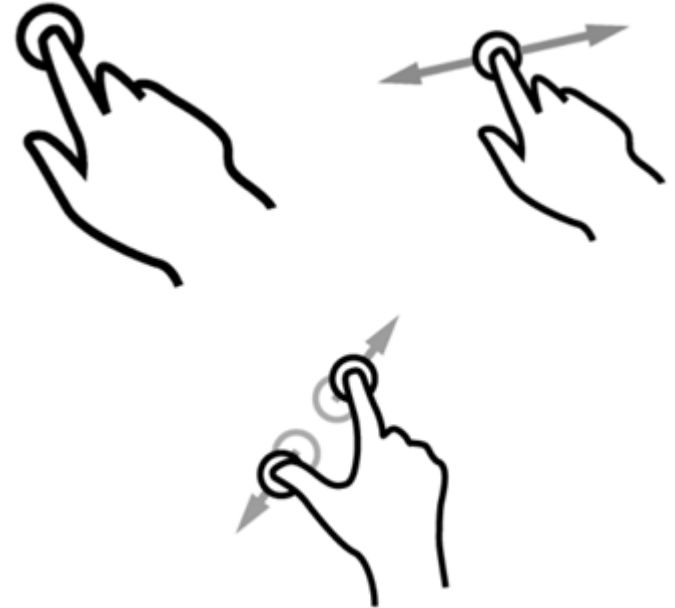
Devices

- Tablet
 - Touch screen
 - On-screen keyboard
- Mobile
 - Touch screen
 - On-screen keyboard
 - Limited screen space



Differences

- Touch screen
 - Thick fingers
 - No hover
 - Swipe gestures
 - Zoom, pan, scroll, ...
- Limited screen space
 - Especially on mobile
- Screen ratio
- On-screen keyboard



Strategies

Native

- Greater functionality
- Mobile optimized
- Offline capability
- Best user experience

- Platform dependent
- Unknown technology

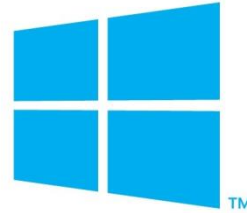
Browser

- Cross platform
- Easier to deploy
- Known technology

- No offline capability

Native Apps

- Platform dependent
- Access local API's
- The best user experience
- Different programming environments
 - IOS (Objective C)
 - Android (Java)
 - Windows 8 (C#)
- Major investment!



Browser Apps

- Single source for multiple platforms
- Centralized maintenance and deployment
- Known environment
 - HTML & CSS
 - JavaScript
- Smaller investment
- Quicker development



Mixed vs Mobile

- Mixed Browser App
 - Single WebApp for all devices
 - Low development & maintenance costs
 - Responsive technology
- Mobile Browser App
 - Optimize for mobile devices
 - Use mobile frameworks

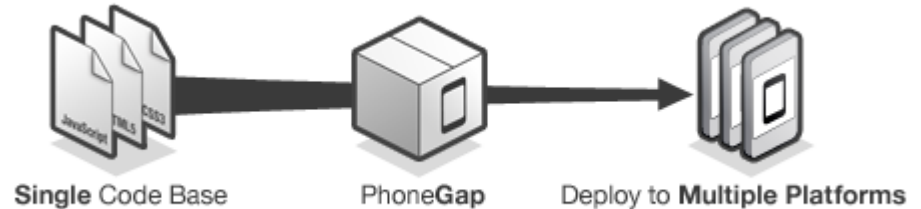
Browser Frameworks

- Written in JavaScript
- Accesses DataFlex Web Services
- Use frameworks
 - jQuery
 - Sencha Touch
 - DHTMLX Touch



Phonegap

- Wraps a Browser App into a Native App
- Access native API's from JavaScript
- Generate for multiple platforms



Cases

- Existing Browser Application
 - Make accessible from mobile devices
- New Browser Application
 - Design for multiple platforms
- New Mobile Application
 - Design specifically for mobile devices

Responsive Layout

- Layout that adjusts itself to the horizontal screen space
 - www.educconference.com
 - www.visitlondon.com
 - www.itravelyork.info



Adjustments

- Navigation changes
- Items reposition
- Items resize
- Items disappear



Breakpoints

- Screen width where layout changes
 - 320px (mobile portait)
 - 400 ----
 - 480px (mobile landscape)
 - 600 ----
 - 768px (tablet portait)
 - 1024px (tablet landscape)

Case study: Using WebApp Framework on mobile devices.

MOBILE WEBORDER

Case Study

- DataFlex WebApp on Mobile
 - Find inconveniences
 - Test improvements
 - Develop responsiveness
- Mobile version of good old Order Entry
 - http://localhost/WebOrderMobile_18/

Responsive in DataFlex

- Reduce piColumnCount
 - Controls get pushed to the next line
 - Controls grow relatively to the view size
- piWidth to 0
 - View stretches to the full width

Event to implement

- OnWindowResize event
 - Triggered on initialization and on window resize
 - Triggers on oWebApp and on the view(s)
 - WebSet properties like piColumnCount, pbShowLabel, pbRender, ...

Added HTML Meta Tag

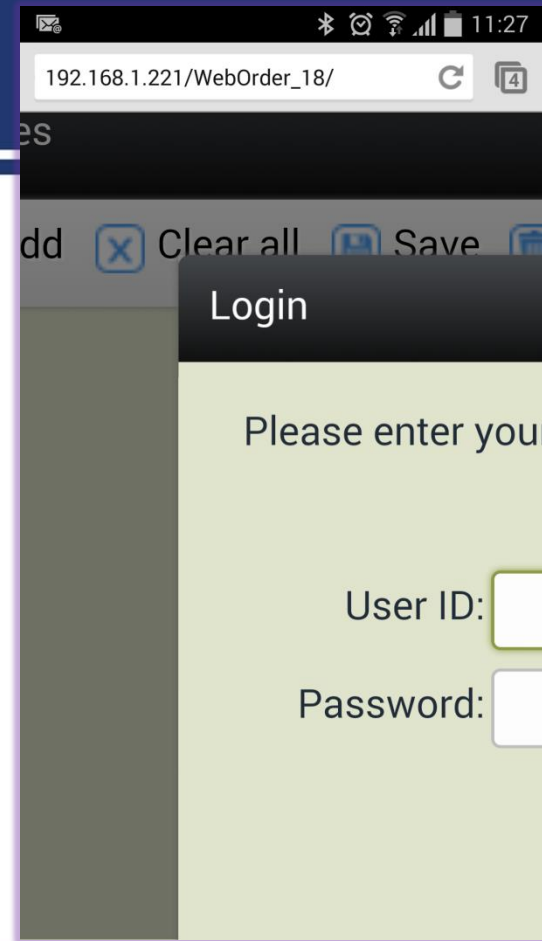
- Controls WebApp size & zoom
 - Prevents from rendering like a desktop
 - Initial zoom level reset
 - Optionally restrict zoom (max-scale)

```
<meta name="viewport" content="width=device-width,  
initial-scale=1.0;">
```

USABILITY IMPROVEMENTS

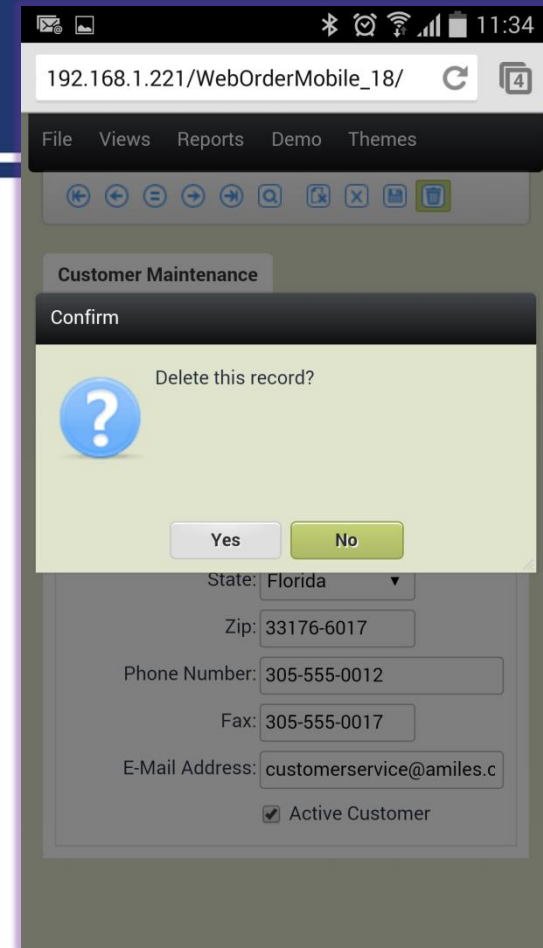
Modal Dialogs

- Panning dialogs while zoomed
 - Did not work
 - Forms disappeared behind the keyboard
- Improved centering logic
 - Orientation change pushed dialog off screen
 - More towards top on mobile devices



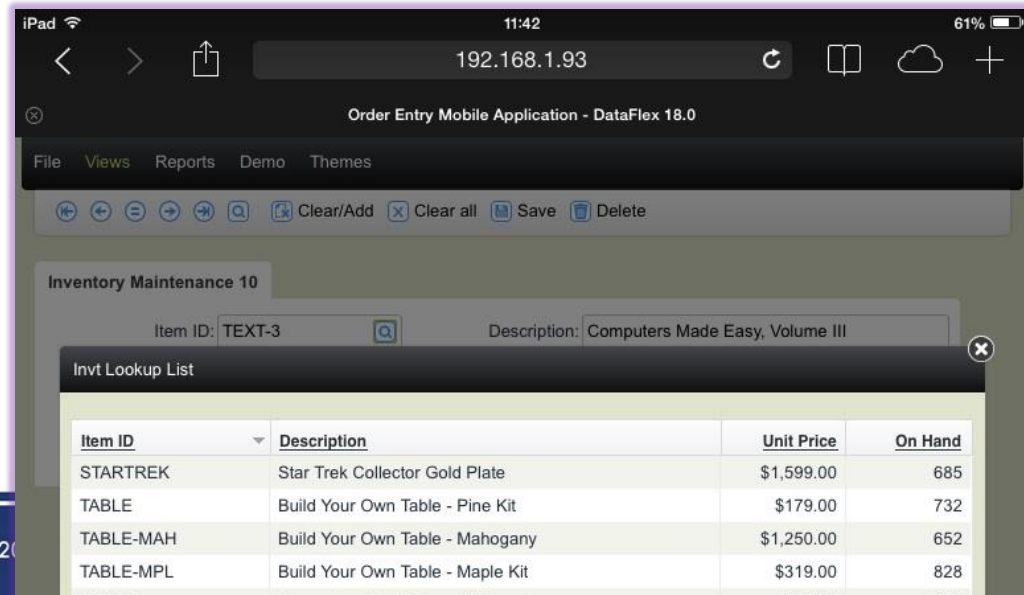
Message Boxes

- Adjust width to screen space



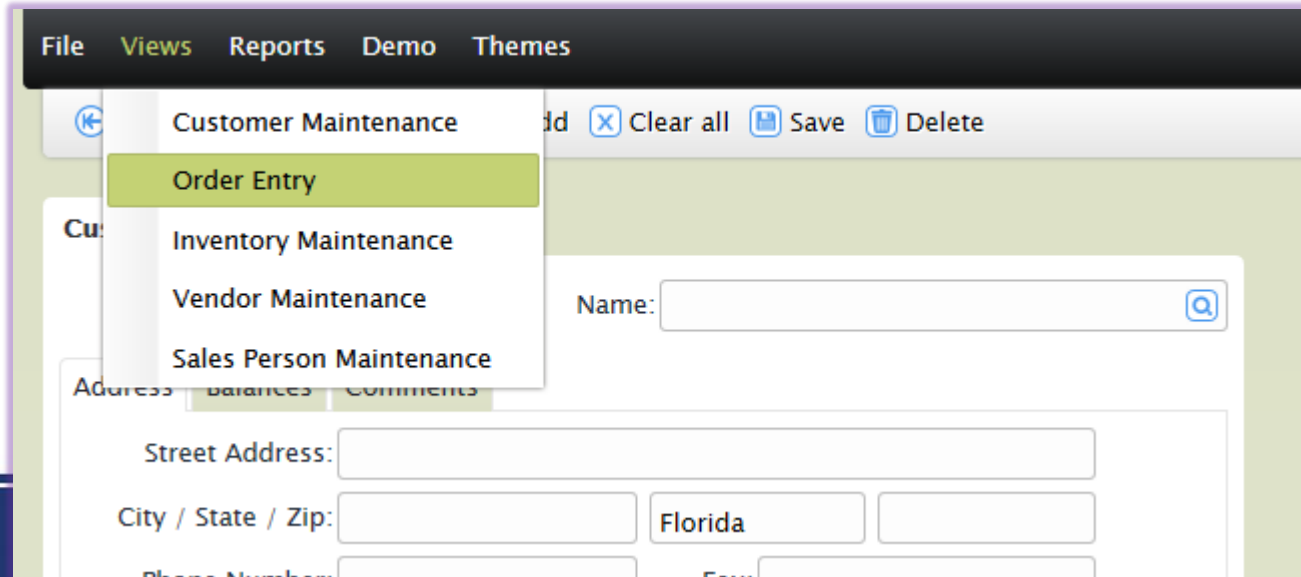
Prompt lists

- Better focus handling
 - Caused a flashing keyboard



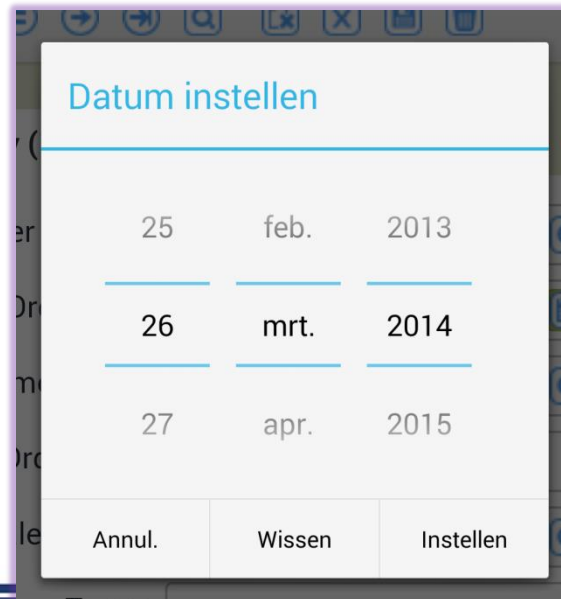
Menu

- Open on click
 - cWebMenuBar - pbShowOnHover



Native date picker

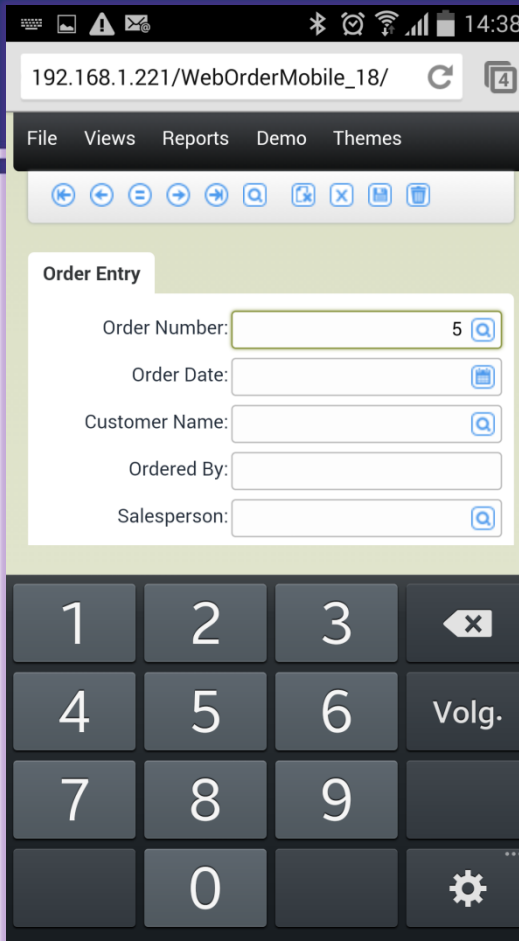
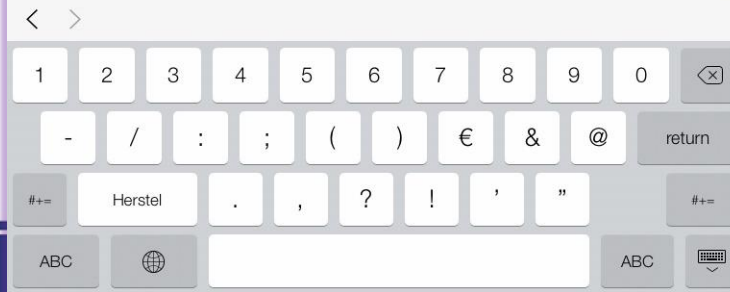
- cWebDateForm - pbHtml5NativeOnMobile



Numeric Keyboard

- cWebForm – pbHtml5NumberOnMobile

	Unit Price	Price	Quantity	Total
ter	\$79.00	\$79.00	1	\$79.00
Box Set	\$49.00	\$49.00	1	\$49.00
er's Tool	\$179.00	\$179.00	5	\$895.00
sy Family	\$129.00	\$129.00	<input type="text" value="5"/>	\$645.00



192.168.1.221/WebOrderMobile_18/

File Views Reports Demo Themes

Order Entry

Order Number:

Order Date:

Customer Name:

Ordered By:

Salesperson:

1 2 3

4 5 6 Volg.

7 8 9

0

Demo

- Website to attract new employees
- Submit job application online
- Manage applications in WebApp
- www.werkenbijdataaccess.nl

Conclusion

- DataFlex WebApps will be the way to go for supporting Mobile Devices!
- First steps are made
 - Improvements in 18.0
 - Responsive concept

Research

- Mobile theme
 - Touch friendly
 - Mobile look
- More improvements
 - Navigation
 - Lists
 - Better responsive API's
- Some mobile controls

I'll be around and would be happy to answer any specific questions you may have...

THANKS!